

Office - Uninstalling CMA/POS

[Office Help Home](#)

- 1 Overview
- 2 Content
- 3 Best Practices
- 4 FAQs
- 5 Downloadable Guide

Overview

This document provides an overview of how to uninstall your CMA and POS applications. This process should be used with caution, and should be performed based on the recommendation of Clubessential's Support team.

Use Case

Periodically, after an Office release, a Club may experience an error (within their POS system) that says, "Please Contact your Application Vendor". This error usually means an uninstall and [reinstall](#) of both the CMA and POS applications are required. The issue occurs mainly due to Anti-virus software installed on a local PC that prevents the update from fully executing, causing the application to error.

Content

- [Uninstalling](#)
 - [Command Prompt](#)
 - [Uninstall/Change](#)
 - [Deleting the 2.0 Folder](#)

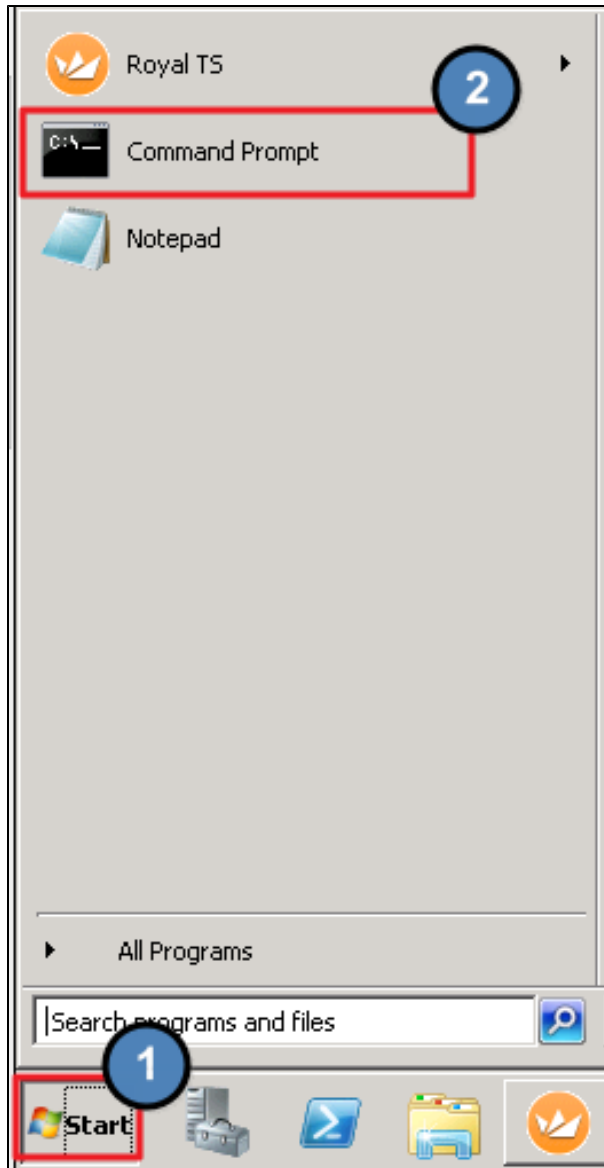
Uninstalling

The steps outlined below will assist you in uninstalling both programs from your machine so you can then [reinstall](#) the applications, and continue serving your Members.

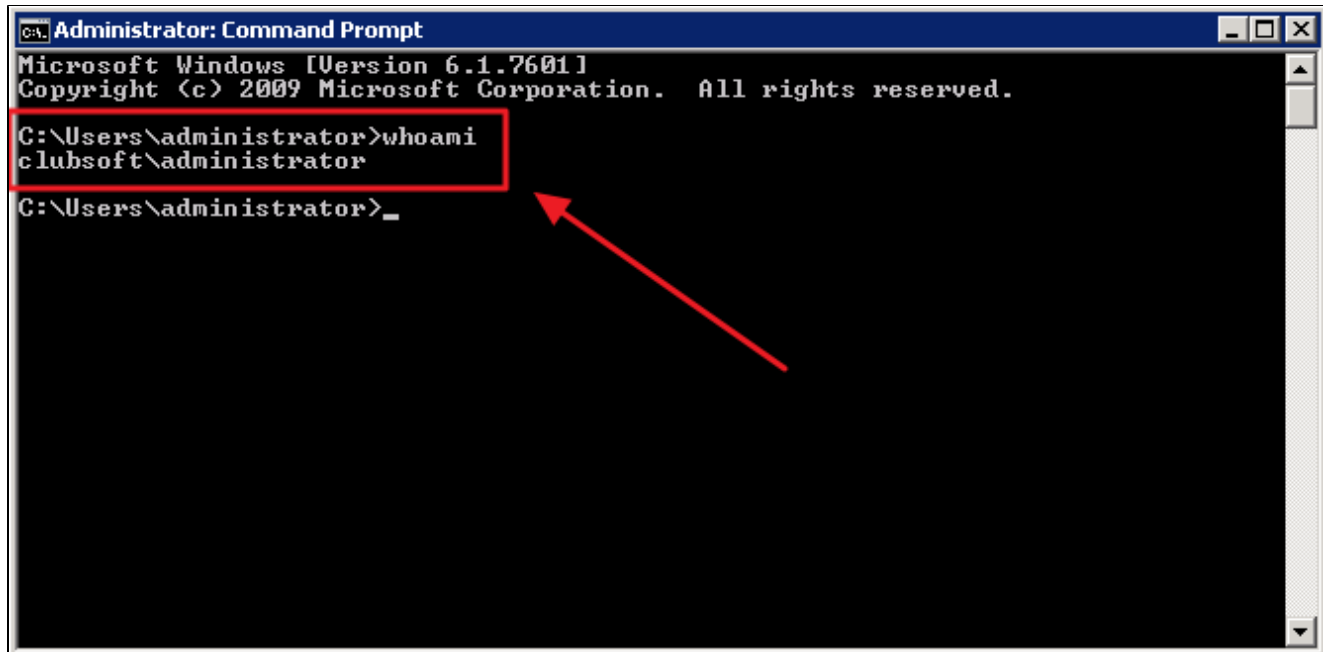
Command Prompt

First, identify the name of your system or machine and make a note of it.

To do so, go to your **Start** menu and search for **Command Prompt** or select it from the quick menu.



From here, type in: **whoami** and hit return or enter. The machine will report back on the next line with the name in the format highlighted below. For this example, the name returned was administrator. Again, please make a note of the name specific to the machine.

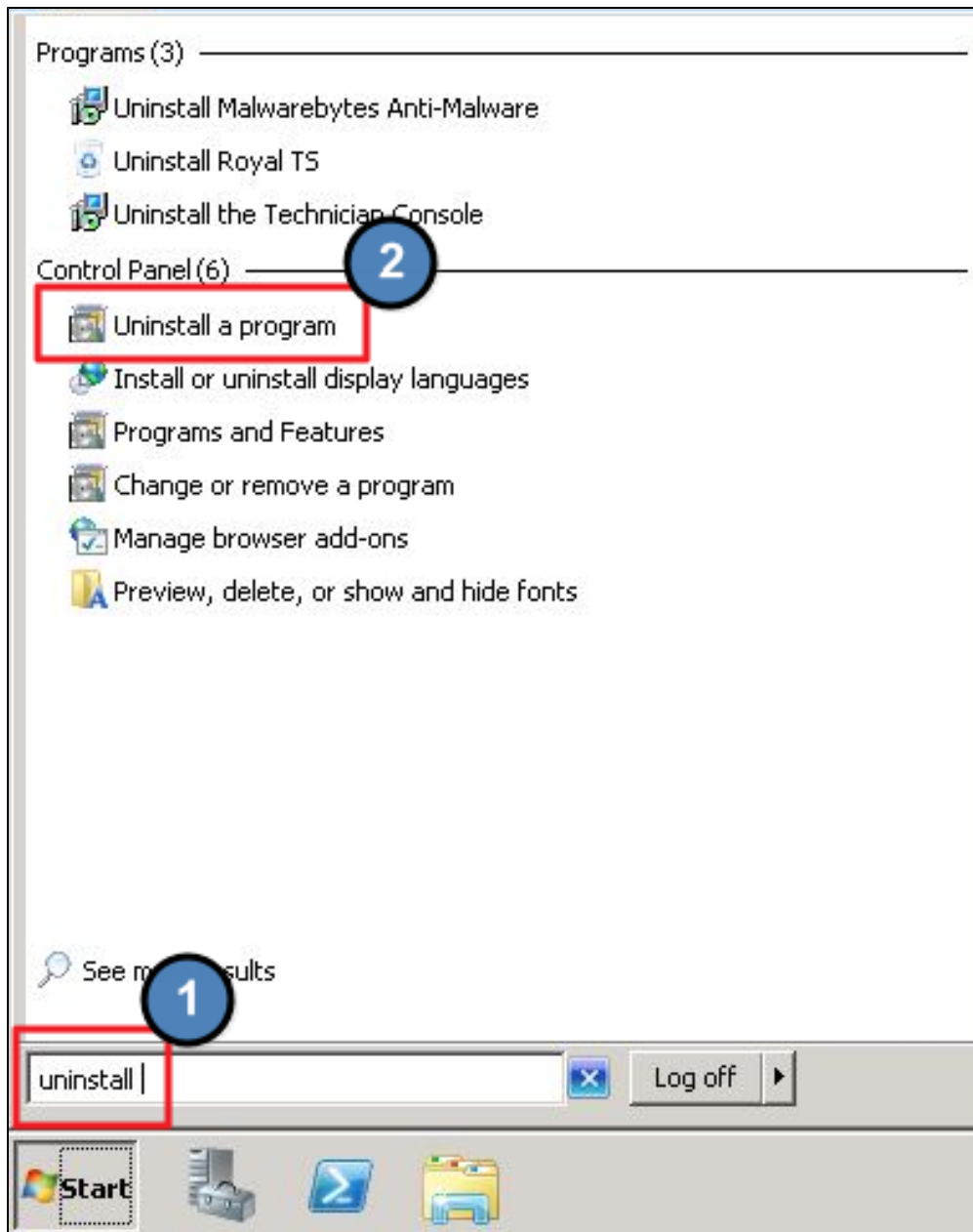


```
Administrator: Command Prompt
Microsoft Windows [Version 6.1.7601]
Copyright (c) 2009 Microsoft Corporation. All rights reserved.
C:\Users\administrator>whoami
clubsoft\administrator
C:\Users\administrator>_
```

A screenshot of a Windows Command Prompt window titled "Administrator: Command Prompt". The window shows the output of the "whoami" command, which is "clubsoft\administrator". A red box highlights the command and its output, and a red arrow points to the output line.

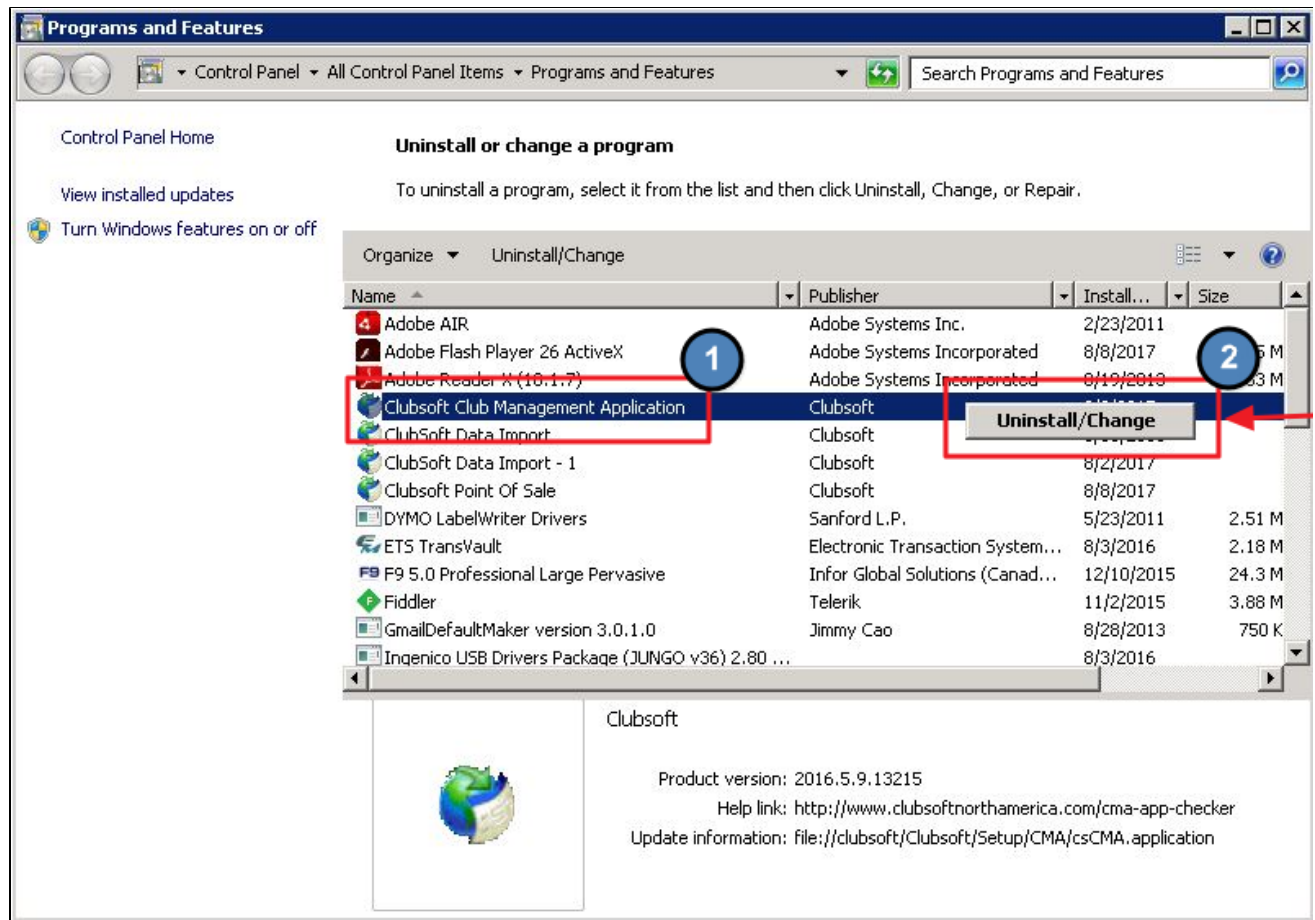
Uninstall/Change

Now, go back to your **Start** menu and search for **Uninstall** then select, **Uninstall a Program**.



From here, select **Clubsoft Management Application**, right click and select **Uninstall/Change**.

Please Note: *You will need to repeat this step to remove the Clubsoft Point of Sale application also.*

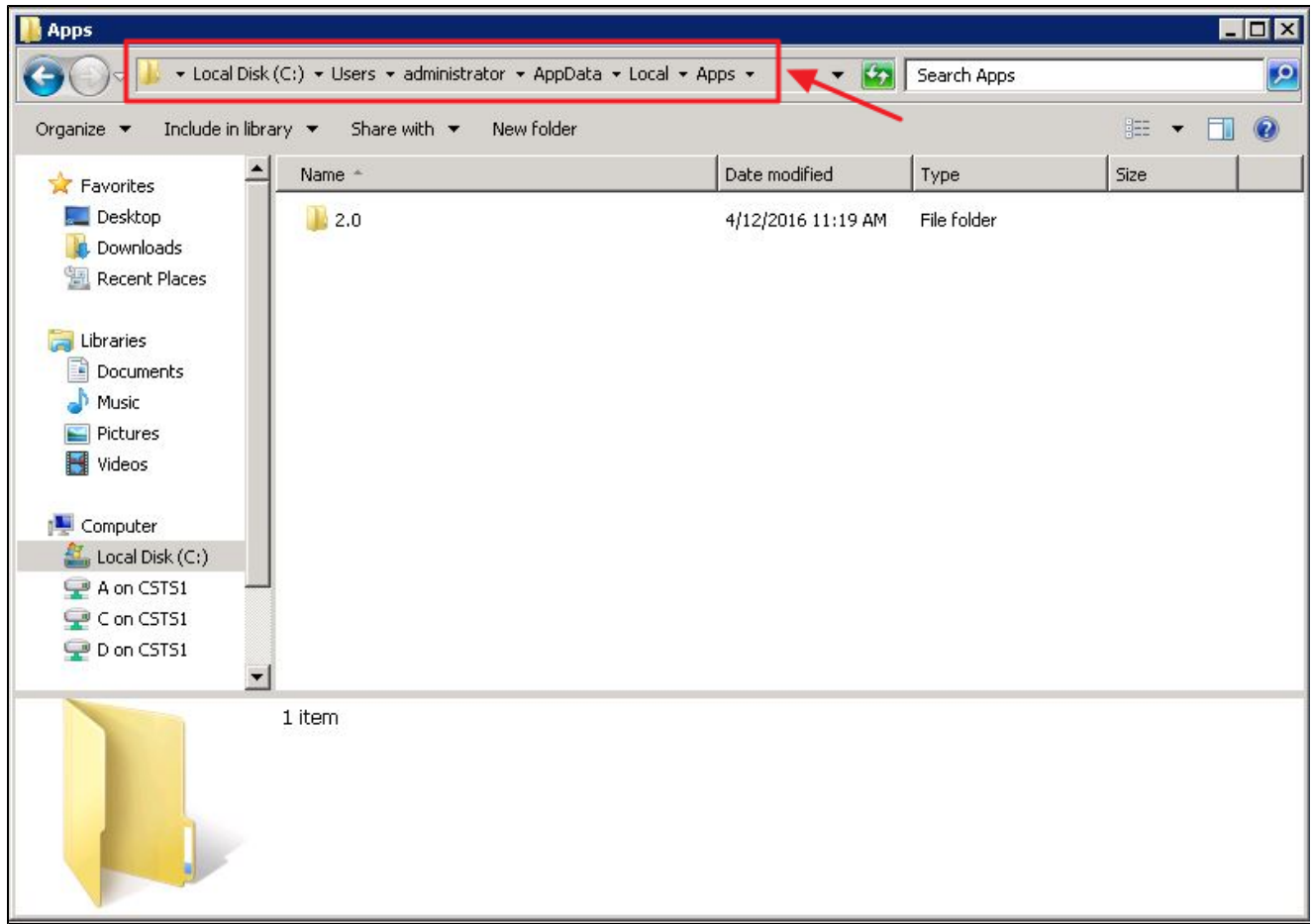


Deleting the 2.0 Folder

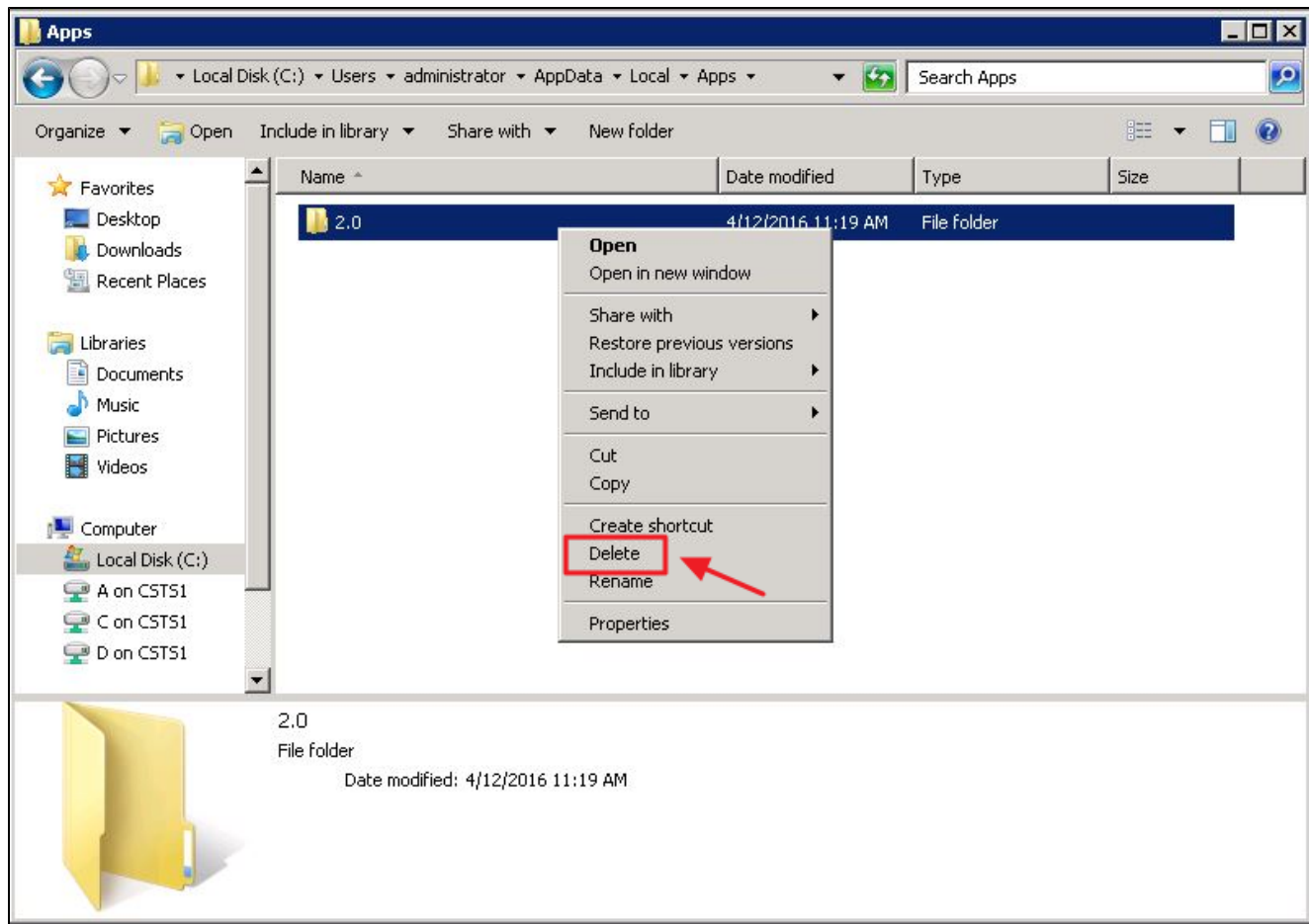
The final step in the uninstall process is to **delete** the user specific **2.0 Folder**. This is when you will need the specific user name of the machine you generated in the **Command Prompt** step.

In your File Explorer, type the following file path (** being the user name you found during the **Command Prompt** step), to locate the 2.0 file:

Computer Local C Users ** App Data Local Apps



Delete the **2.0 folder** from the user name you requested earlier in the **Command Prompt** step. For the examples here, the user's name is administrator. Please right click and then delete this folder.



At this point you have successfully **uninstalled CMA/POS**. To reinstall, click [here](#) for more info.

Best Practices

- The system will populate the Machine's name during the **Command Prompt** step - please make a note of this name as you will need it during the **Deleting 2.0** step.
- Make sure to repeat the above steps to uninstall not only the Clubsoft Management Application but also the Clubsoft Point of Sale system.
- Refer to the documentation on [reinstalling](#) to continue.

FAQs

Q. What if I do not have access to the Uninstall/Change Program option?

A. This could mean that Clubessential does not host your server and you will need to contact your IT company to access this portion of the server or have them complete this process.

Q. What if I can not locate the Clubsoft folder on my machine?

A. If you cannot locate the Clubsoft folder on your machine, you will need to reach out to your IT department or for other assistance please

reach out to your Clubessential Support team.

Downloadable Guide

Office - Uninstall CMA/POS